



9108DP

Dual Piston, Straight Line Sander

OPERATING INSTRUCTIONS AND PARTS MANUAL



SPECIFICATIONS

- Paper Size 2 $\frac{2}{3}$ " x 17 $\frac{1}{2}$ " (7 cm x 44.5 cm)
- Stroke Length 1" (2.5 cm)
- Net Weight 6 $\frac{1}{4}$ lb (2.8 kg)
- Strokes per min. 2200
- Avg. Air Cons. (SCFM)..... 5
- Recommended Air Pressure..... 90 PSI

IMPORTANT!

Read carefully before operating this tool. Failure to operate any power tool properly can result in personal injury and/or property damage.

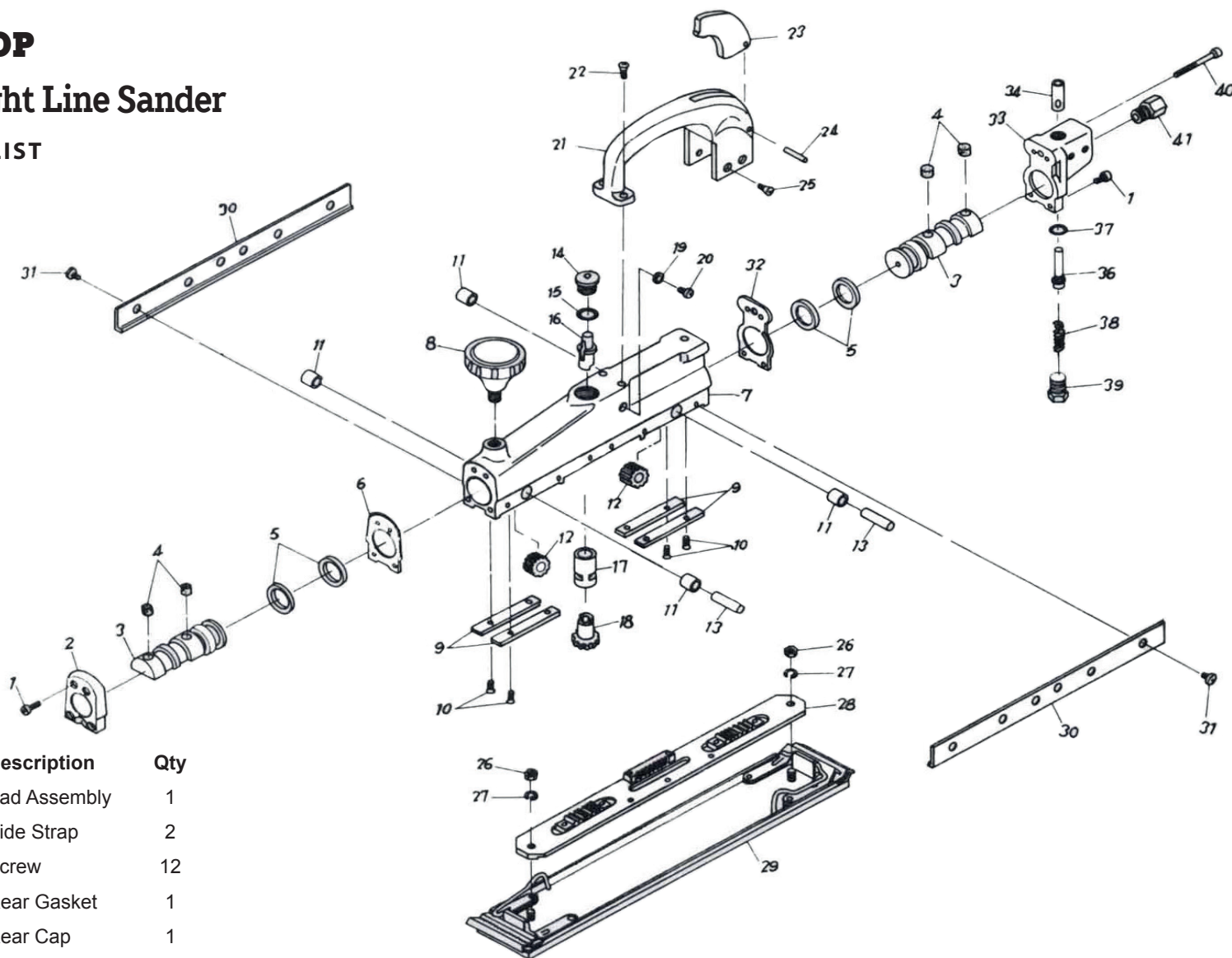
9108DP

Dual Piston, Straight Line Sander

PARTS LIST

#	Description	Qty
1	Screw	6
2	Front Cap	1
3	Piston	2
4	Plug	4
5	Piston Ring	4
6	Front Gasket	1
7	Body	1
8	Knob	1
9	Wear Plate	4
10	Screw	8
11	Bearing	4
12	Gear	2
13	Gear Shaft	2
14	Plunger	1
15	O-Ring	1
16	Adjusting Shaft	1
17	Valve	1
18	Actuator Gear	1
19	Washer	1
20	Screw	1
21	Handle	1
22	Screw	2
23	Trigger	1
24	Roll Pin	1
25	Screw	4
26	Nut	2
27	Washer	2
28	Carrier	1

#	Description	Qty
29	Pad Assembly	1
30	Side Strap	2
31	Screw	12
32	Rear Gasket	1
33	Rear Cap	1
34	Bushing	1
35	Valve Pin	1
36	O-Ring	1
37	Valve Spring	1
38	Valve Plug	1
39	Screw	2
40	Hose Adapter	1



Lubrication and maintenance

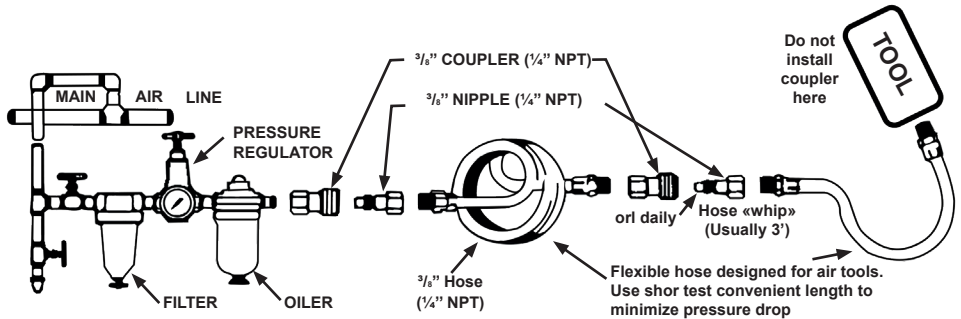
Keep tools cleaned and lubricated

Lubricate the air motor daily with a good grade of air motor oil. A tea spoon of oil can be poured into the tool air inlet (B), or into the hose at the nearest connection to the air supply. The run the tool. A rust inhibitive oil such as «Marvel Mystery Oil», available from auto supply stores, etc., is acceptable for the air motor.

Operating Instruction and Safety Rules

Tool of this class operate on a wide range of air pressures. It is recommended the air pressure of this tool measure 90 PSI at the tool while running free. Higher pressure will shorten the tool's life because of faster wear.

Water in the air line will cause damage to the tool. Drain the air tank daily. Clean the air inlet filter screen on at least a weekly schedule.



Safety Rules

1. Do not use back sanding discs. Use only paper discs and proper adhesive. Follow adhesive manufacturer's directions exactly as specified.
2. Never take any risks with you eyes. Always wear approved eye protection.
3. Use dust mask. It is advisable, when sanding for extended periods of time, to wear a protective mask. This will help prevent breathing in the fine dust created while sanding.
4. Disconnect tool before performing service, changing accessories and when not in use.
5. Always use tool a safe distance from other people in work area.
6. Secure work with clamps or vise so both hands are free to operate tool. Keep proper footing and balance at all times.
7. Do not wear loose or ill-fitting clothing, remove watches and rings.
8. Keep tool away from body when it is running.
9. Use proper hose and fitting. Never use quick change couplings attached at tool. They add weight and could fail due to vibration. Instead, add a hose whip and connect coupling between air supply and hose whip.
10. Make sure the RPM rating of the pad corresponds with the manufacturer's recommended speed of the tool. Over speeding an accessory is just plain dangerous.

PRO-TEK

Longueuil (Qc) Canada
marketing@pro-tek.ca
1 800 361-7956

1+1 www.pro-tek.ca

 www.pro-tek-sprayequipment.com