



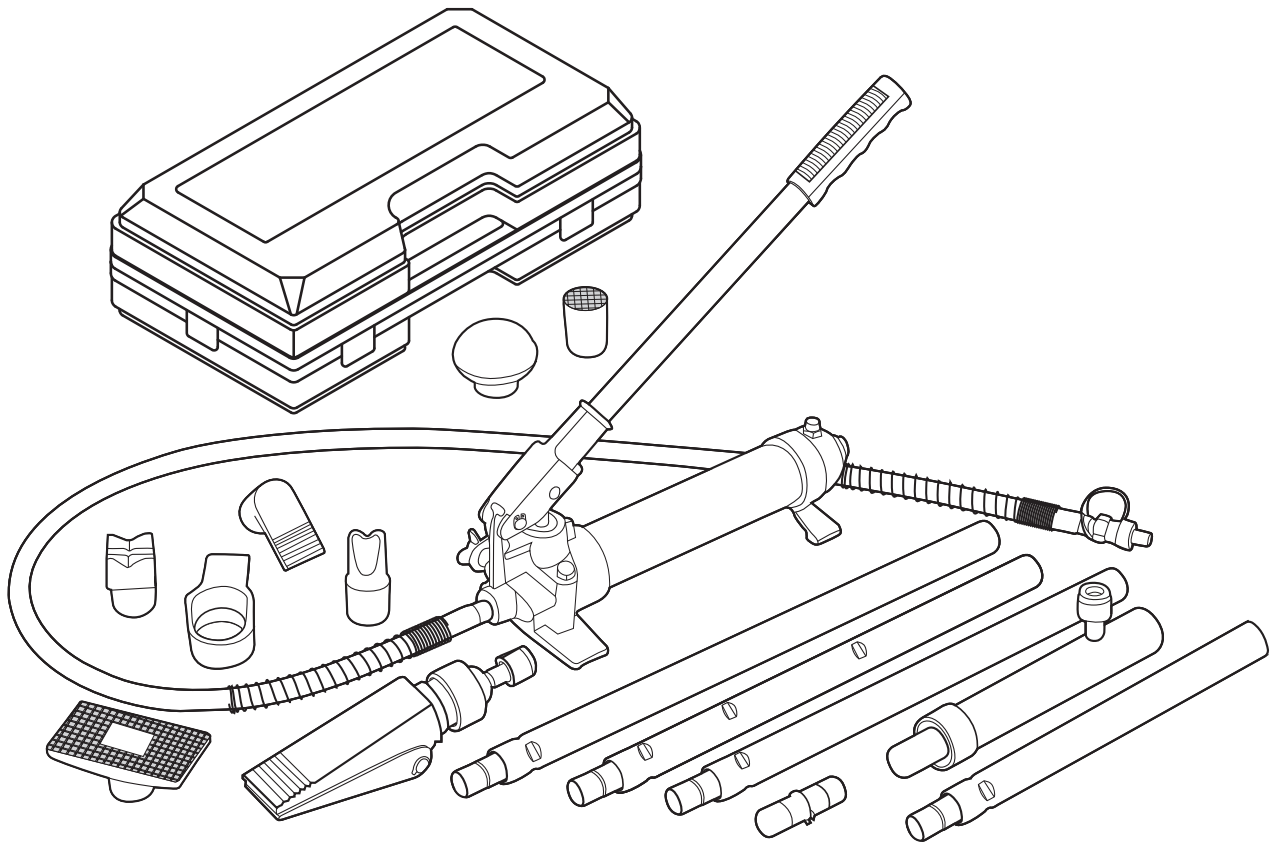
**9078**

## **4 Ton Body Repair Kit**

**Trousse de réparation pour châssis  
4 tonnes**

**OPERATING INSTRUCTIONS AND PARTS MANUAL**

MODE D'EMPLOI ET MANUEL DES PIÈCES



## IMPORTANT

Please read these instructions carefully. Note the safety instructions and warnings. Use the product correctly and with care for the purpose for which it is intended. Failure to do so may cause damage to property and/or serious personal injury. Please keep this instruction manual safe for future use.

## SAFETY INSTRUCTIONS AND WARNINGS

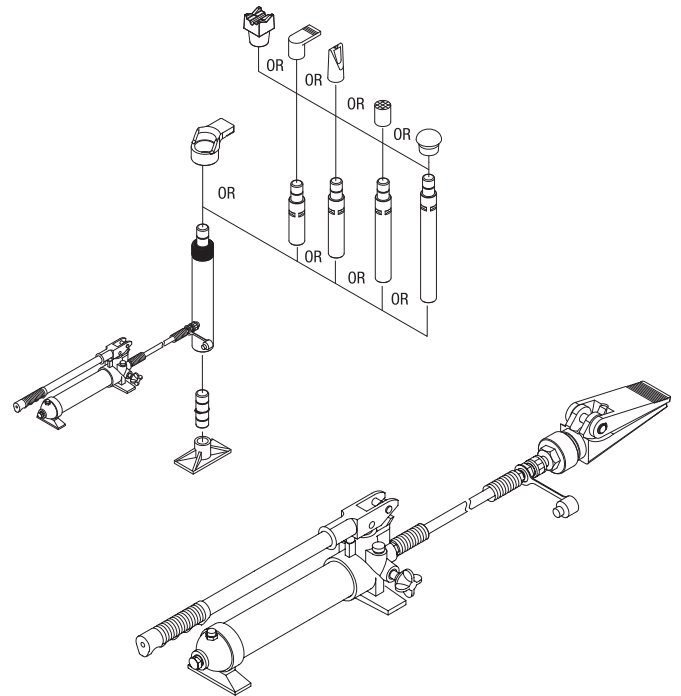
1. The maximum ram capacity is 4 tons. DO NOT exceed this rated capacity.
2. When extension tubes are used, the rated capacity is always reduced by 50% for each tube connected.
3. The maximum spreader capacity is 0.5 tons. Maximum ram toe and plunger toe capacity is 0.5 tons (4-ton repair kit). DO NOT exceed these rated capacities when using these attachments.
4. DO NOT use this equipment as a vehicle lifting device or as a vehicle support. Do not make any alterations to this product.
5. Do not adjust the safety valve.
6. Keep children and unauthorized persons away from the work area.
7. Remove loose clothing. Remove ties, watches, rings and other loose jewellery, and contain long hair.
8. Always wear ANSI approved safety goggles when operating the repair kit.
9. Keep proper balance and footing, do not overreach and wear nonslip footwear.
10. Only use this equipment on a surface that is stable, level, dry and not slippery, and capable of sustaining the load. Keep the surface clean, tidy and free from unrelated materials and ensure that there is adequate lighting.
11. When using this equipment, open the breather valve (P09). Close it when not in use.
12. DO NOT allow the piston rod (R03) of ram to extend so far as to exceed the maximum ram stroke.
13. When coupler valves are disconnected, always use dust cap to keep the hydraulic system clean.
14. DO NOT drop any heavy objects onto the hose and DO NOT twist the hose. Always keep the hose clean to avoid damage to the hose and couplers.
15. Keep the equipment away from heat or fire, as this may cause damage or weaken the seals.
16. DO NOT operate this equipment when you are tired or under the influence of alcohol, drugs or any intoxicating medication.
17. DO NOT allow untrained persons to operate the equipment and DO NOT make any modifications to it.
18. DO NOT expose the equipment to rain or any other kind of bad weather.
19. Use a qualified person to maintain the equipment in good condition. Keep it clean for best and safest performance.
20. If the equipment needs repairing and/or there are any parts that need to be replaced, have it repaired by authorized technicians and only use the replacement parts supplied by the manufacturer.

## SPECIFICATIONS

Rated capacity: ..... 4 tons  
 Ram min. height: ..... 10 - 1/2"  
 Stroke: ..... 4-3/4" (120 mm)

## OPERATING INSTRUCTIONS

- Connect the hydraulic ram, hose and pump unit together, ensure that you have securely fastened the couplers before pumping (as shown in Figures 1 and 2).



- Open the breather valve (P09).
- Firmly close the release valve (P15) by turning it clockwise.
- Adjust the ram slowly to make the load coaxial with the ram.
- Pump the handle (P39) up and down to supply pressure.
- When work is done, SLOWLY and CAREFULLY turn the release valve counter-clockwise (never more than one turn) to release the pressure until ram retracts to desired position.
- Close the breather valve.



### WARNING!

Inspect before each use. Do not use if bent, broken, leaking, damaged components or any suspect parts are noted and/or it has been subjected to a shock load.

**NOTE:** The pump can be used in any position from horizontal to vertical. Always keep the hose end of the pump downward when it is not horizontal.

## MAINTENANCE

- When not in use, store the equipment in a dry location with the pump piston (P34) and the ram fully retracted.
- Periodically check the ram and pump piston for signs of rust or corrosion. Clean exposed areas with a clean oiled cloth.
- A coating of light lubricating oil to pivot points, axles and hinges will help to prevent rust and assure that pump assemblies move freely. Periodically lubricate the pivot points, axles and hinges with a light lubricating oil as needed.
- With ram fully lowered, set pump unit in its normal, level position. Remove the oil filler screw (PO7) to check the hydraulic oil level. If it is not adequate, add high quality hydraulic jack oil as necessary.
- To ensure best performance and longer equipment life, replace the complete hydraulic oil at least once a year. With ram fully lowered, remove the oil filler screw (PO7) and drain the oil into a suitable container. Ensure that no dirt gets into the system. Set the pump in its normal level position, fill with approved hydraulic jack oil, then replace the oil filler screw (PO7).
- When equipment efficiency drops, purge air from hydraulic system: Turn the release valve counter-clockwise 1 1/2 turns. When fully retracted and release valve open, pump the handle rapidly 10-20 times.
- It is recommended that an annual inspection be done by qualified technicians.



### WARNING!

Never use sandpaper or abrasive material on these surfaces!

**DO NOT** use brake fluid or any other improper fluid and avoid mixing different types of oil when adding hydraulic oil.

**NOTE:** Dispose of hydraulic oil in accordance with local regulation.

## ENVIRONMENTAL CONCERNS



Dispose of hydraulic oil in accordance with local regulations. Pouring oil onto the ground or into storm drains, or tossing it into trash cans, even in a sealed container, is illegal and can contaminate and pollute the environment.

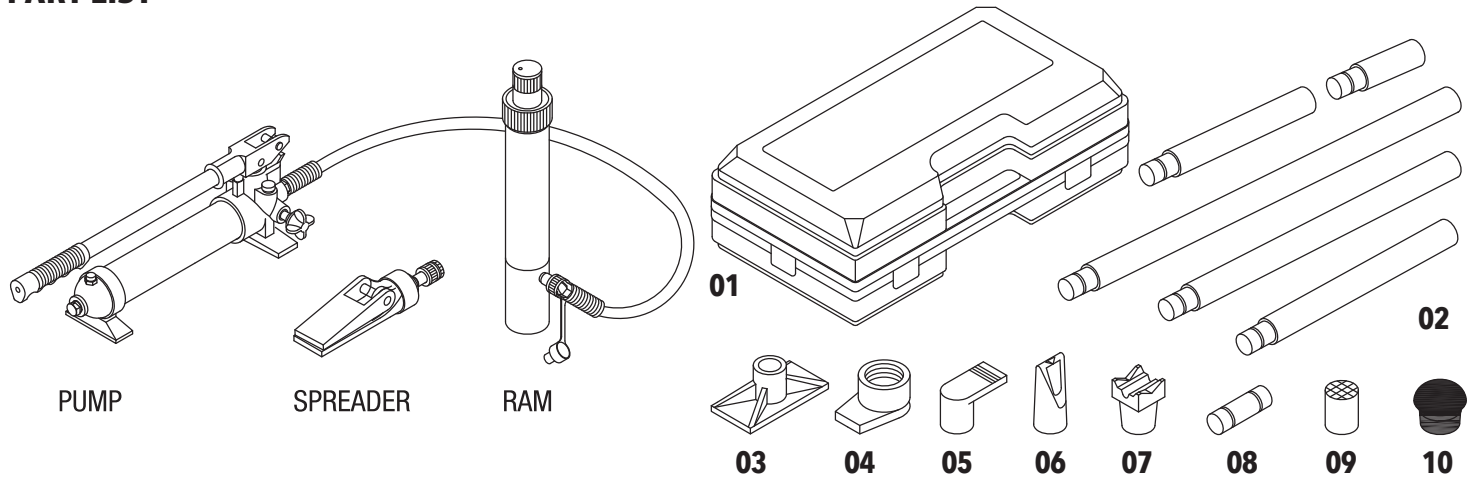


The materials are recyclable. By recycling, material recycling or other forms of reutilization, you are making an important contribution towards protecting our environment.

## TROUBLESHOOTING

Symptom	Possible Causes	Corrective Action
Ram won't lift load	Release valve not tightly closed Overload condition Air trapped in system	Firmly close release valve Remedy overload condition Purge away air from system
Ram won't maintain load	Release valve not tightly closed Hydraulic unit malfunction	Firmly close release valve Replace ram and/or pump
Ram won't lower after unloading	Reservoir overfilled Linkages binding	Drain oil to proper level Clean & lubricate moving parts
Ram won't extend to full stroke	Oil level low	Add hydraulic oil
Roor performance	Oil level low Air trapped in system	Add hydraulic oil Purge away air from system

## PART LIST

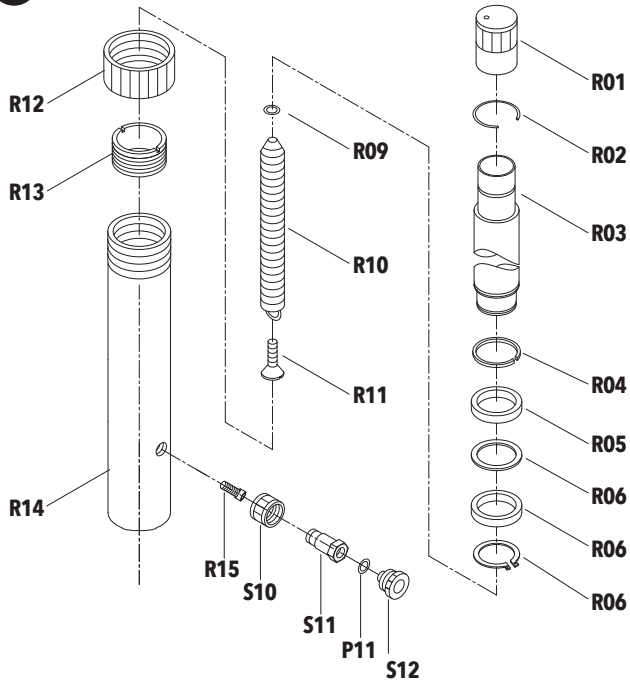


No.	Description	Qty
01	Case	1
02	Tube	5
03	Flat base	1
04	Ram toe	1
05	Plunger toe	1
06	Wedge head	1
07	V-base	1
08	Male connector	1
09	Serrated saddle	1
10	Rubber head	1
P01	Valve block	1
P02	Oil filter	1
P03	O-ring	2
P04	Reservoir	1
P05	Tie rod	1
P06	Nylon ring	1
P07	Oil filter screw	1
P08	Sealing	1
P09	Breather valve	1
P10	Screw	1
P11	O-ring	3
P12	Pump foot	1
P13	Ball	2
P14	O-ring	1
P15	Release valve	1
P16	Hydraulic hose	1
P17	Coupler	1
P18	Hose dust cover	1

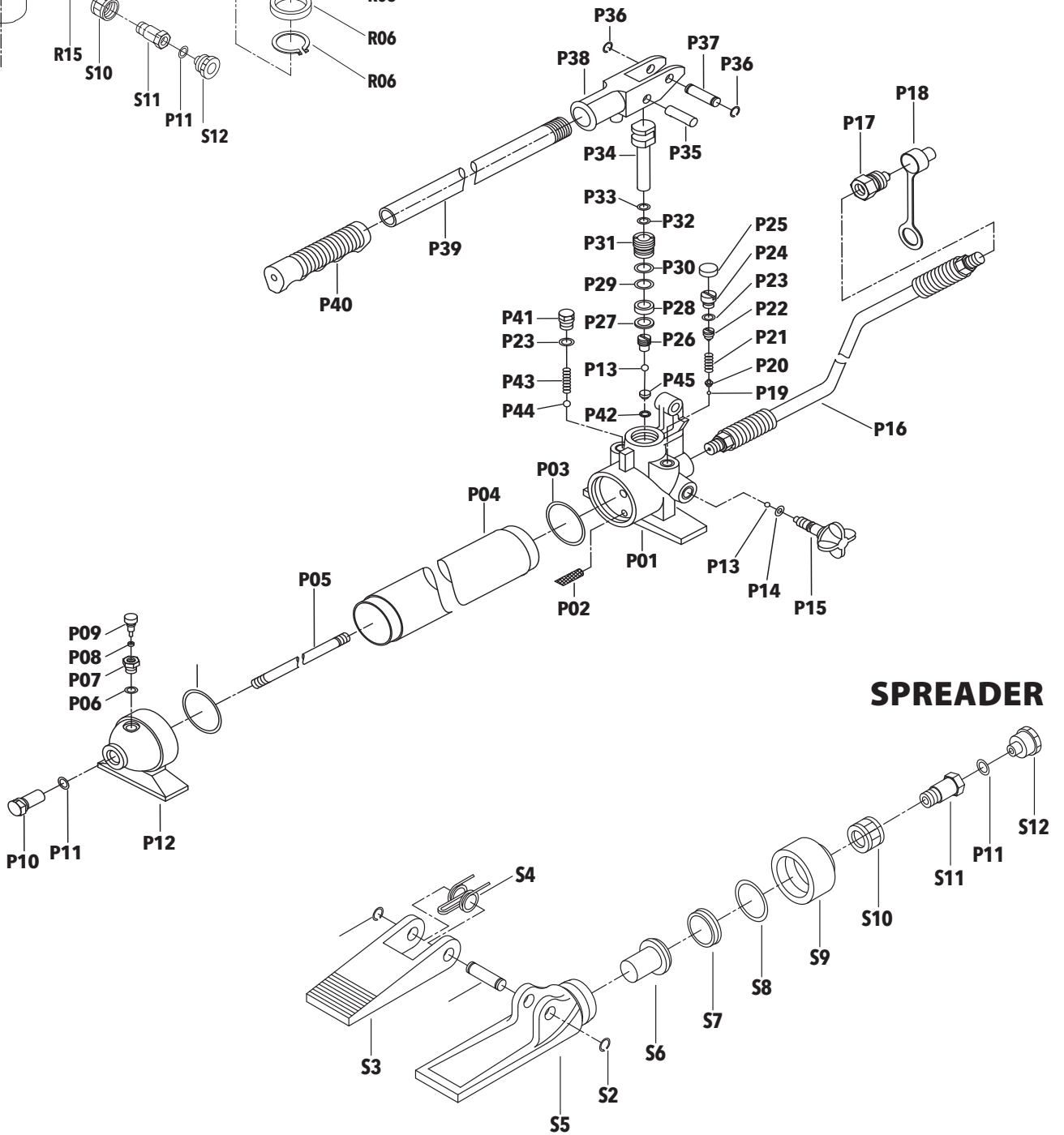
No.	Description	Qty
P19	Ball	1
P20	Ball cap	1
P21	Spring	1
P22	Screw	1
P23	O-ring	2
P24	Screw	1
P25	Screw protector	1
P26	Screw	1
P27	Nylon ring	1
P28	Sealing ring	1
P29	O-ring	1
P30	Nylon ring	1
P31	Screw	1
P32	O-ring	1
P33	Nylon ring	1
P34	Piston	1
P35	Pin	1
P36	Retaining ring	2
P37	Pin	1
P38	Handle socket	1
P39	Handle	1
P40	Handle sleeve	1
P41	Screw	1
P42	Nylon ring	1
P43	Spring	1
P44	Ball	1
P45	Screw	1

No.	Description	Qty
R01	Cover	1
R02	Cir clip	1
R03	Piston rod	1
R04	Cir clip	1
R05	Bushing	1
R06	Nylon ring	1
R07	Sealing ring	1
R08	Cir clip	1
R09	Nut	1
R10	Spring	1
R11	Screw	1
R12	Protection cap	1
R13	Riing for ram	1
R14	Cylinder	1
R15	Screw	1
S1	Pin	1
S2	Cir clip	2
S3	Movable jaw	1
S4	Spring	1
S5	Fixed jaw	1
S6	Piston	1
S7	Cup seal	1
S8	O-ring	1
S9	End cap	1
S10	Coupling ring	2
S11	Coupling bolt	2
S12	Dust cap	2

## RAM



## PUMP



## SPREADER



***PRO-TEK***

Longueuil (Qc) Canada

marketing@pro-tek.ca | 1 800 361-7956

🇨🇦 [www.pro-tek.ca](http://www.pro-tek.ca)

🇺🇸 [www.pro-teksprayequipment.com](http://www.pro-teksprayequipment.com)