

SOME OF OUR COMMITMENTS

COMMUNITIES

- Nunavik Nickel Agreement
- Kauutaapikkut Strategic Table
- Esuma Consultation Table
- Annual Fishing Activity
- Nunavik Mining Workshop
- Inuit Community Information Program

ENVIRONMENT

- Thorough Environmental Monitoring
- Caribou Ungava Research Participation
- Fauna and Flora Protection Plan
- Program for Environmental Improvement in Inuit Communities
- Restor-Action Nunavik Fund

CONSULTATION

We wish to include **Inuit knowledge, land use, and additional components of interest** to communities to the project's impact assessment (ESIA).



A specific **subcommittee** for the Inukshuk Project will be implemented within the Nunavik Nickel Agreement.

WHY CONSULT NOW?

The discovery of the new **Inukshuk** deposit in 2021 has increased the life of mine of the **Nunavik Nickel Project** to 2035.

Thus, to ensure continued mining operations, there is a need to add a **new tailings cell** to accommodate mine tailings from our different sites.

We are consulting Nunavik's population about the Inukshuk Project and the new tailings cell, but other projects are currently under government assessment:

- Extension of Mesamax pit and addition of underground mine; increase in discharge flow from the mining water treatment plant
- Operation of a quarry (Expo 2b) and a sand pit (Expo 2b)
- Phase 2a: underground operations (Expo Sud, Ivakkak UG and Mequillon UG2 mines) and related projects
- Crushing of waste rock at the Ivakkak site

CONTACT US



Reach out to us for **knowledge-sharing, questions, or comments** about our projects.



1-877-879-1688 #1204



communitysupport@canadianroyalties.com



canadianroyalties.com

Inukshuk Project and a New Tailings Cell

PUBLIC CONSULTATION

Information Document



CANADIAN ROYALTIES INC.



ABOUT US

Canadian Royalties is a Montreal-based **mining company** operating a copper and nickel mine in Nunavik under the **Nunavik Nickel Project**.

With over **600 employees**, including **8% Inuit Beneficiaries**, we promote economic growth and job opportunities in the region.

Our operations yield tangible benefits for the Northern communities surrounding the Nunavik Nickel Project. Since 2012, we have generated about **\$700 M in revenues for Qualified Inuit Enterprises**.

ENVIRONMENTAL MANAGEMENT

SITE RESTORATION

Both the Inukshuk Project and the new tailings cell will be restored at the end of their operations.

\$110 million fund secured and allocated for the complete restoration of our sites.
Restoration subcommittee coming soon

SPILL PREVENTION

Solid procedures to prevent and manage spills:

- Emergency Measures Plan
- Complete remediation in case of a spill
- Spill kit in every vehicle and at multiple locations on site
- Systematic spill reporting by employees

NEW TAILINGS MANAGEMENT OPTIONS

A MEQUILLON & MESAMAX PITS

Capacity : 6 600 000 m³





New pipes that would pump tailings to each pit

B INFRASTRUCTURE AT EXPO

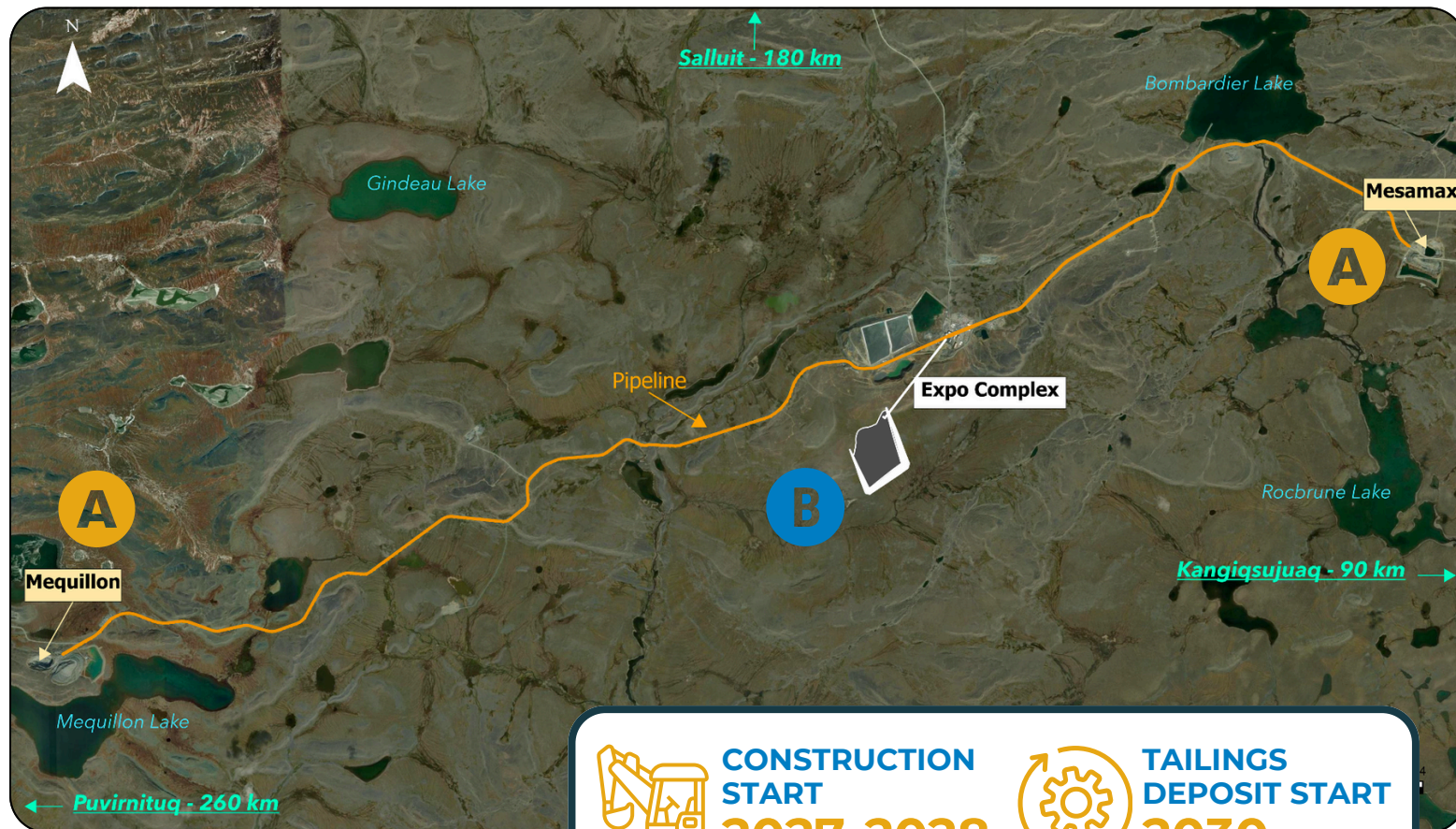
Capacity : 7 100 000 m³

New tailings cell west of Expo Camp

DRAWBACKS

-  Minimal visual impact - use of existing infrastructures
-  Minimal impact on land
-  Distance between the Expo Complex and pits
-  Potential impacts on fish habitat

-  Greater distance from river and fish habitat
-  Trusted tailings management techniques
-  Additional infrastructure restoration
-  Dust generation during construction



CONSTRUCTION START
2027-2028



TAILINGS DEPOSIT START
2030

INUKSHUK MINE PROJECT

HIGHLIGHTS

100% underground mining

3,000 tons of ore/day

4,808 tons of ore/day processed at the concentrator

WASTE MANAGEMENT

Waste rock from Expo and Méquillon will be transported by **truck** for **backfilling at Inukshuk**.



NO NEW EFFLUENT

Contact water collected at Inukshuk will be pumped and treated at Expo.

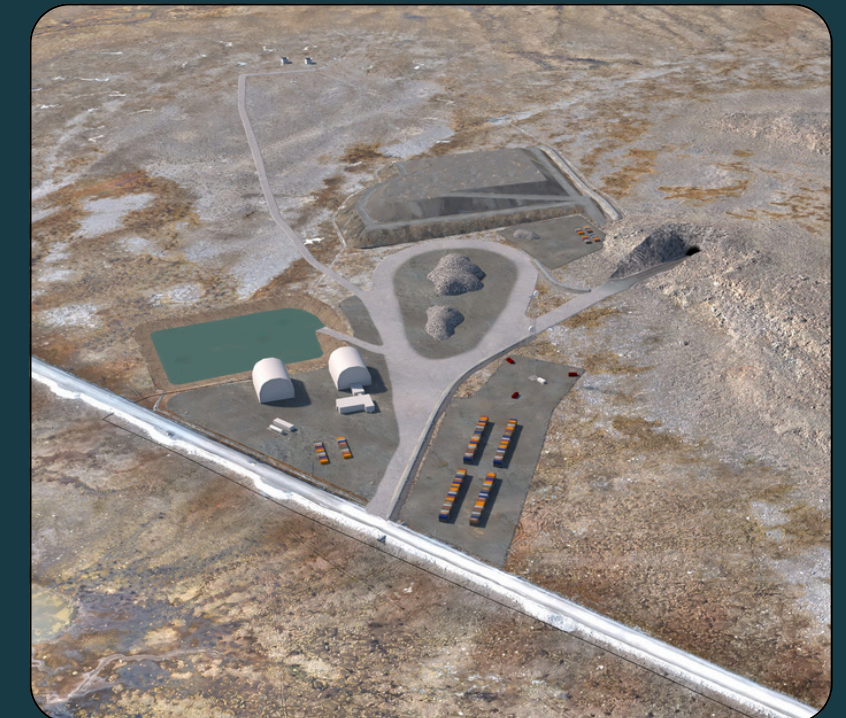
ECONOMIC BENEFITS

Recognized Inuit enterprises, which currently contribute significantly to the Nunavik Nickel Project, are expected to receive 25.3% of project spending totaling \$434.5M.



MAIN INFRASTRUCTURES

- Ore pad and waste rock dump
- Mine water collection pond and waste water line to Expo Complex
- Platforms, domes and telecommunication tower
- Portal access to underground mine



*Location of surface infrastructure subject to change

INUKSHUK DEVELOPMENT TIMELINE

2008

2045

