

SOME OF OUR COMMITMENTS

COMMUNITIES

- Nunavik Nickel Agreement
- Kauutaapiklut Strategic Table
- Esuma Consultation Table
- Annual Fishing Activity
- Nunavik Mining Workshop
- Inuit Community Information Program

ENVIRONMENT

- Thorough Environmental Monitoring
- Caribou Ungava Research Participation
- Fauna and Flora Protection Plan
- Program for Environmental Improvement in Inuit Communities
- Restor-Action Nunavik Fund

CONSULTATION

We wish to include **Inuit knowledge, land use, and additionnal components of interest** to communities to the project's impact assessment (ESIA).



A specific **subcommittee** for the Inukshuk Project will be implemented within the Nunavik Nickel Agreement.

WHY CONSULT NOW?

The discovery of the new **Inukshuk** deposit in 2021 has increased the life of mine of the **Nunavik Nickel Project** to 2035.

Thus, to ensure continued mining operations, there is a need to add a **new tailings cell** to accommodate mine tailings from our different sites.

We are consulting Nunavik's population about the Inukshuk Project and the new tailings cell, but other projects are currently under government assessment:

- Extension of Mesamax pit and addition of underground mine; increase in discharge flow from the mining water treatment plant
- Operation of a quarry (Expo 2b) and a sand pit (Esker 2b)
- Phase 2a: underground operations (Expo Sud, Ivakkak UG and Mequillon UG2 mines) and related projects
- Crushing of waste rock at the Ivakkak site

CONTACT US

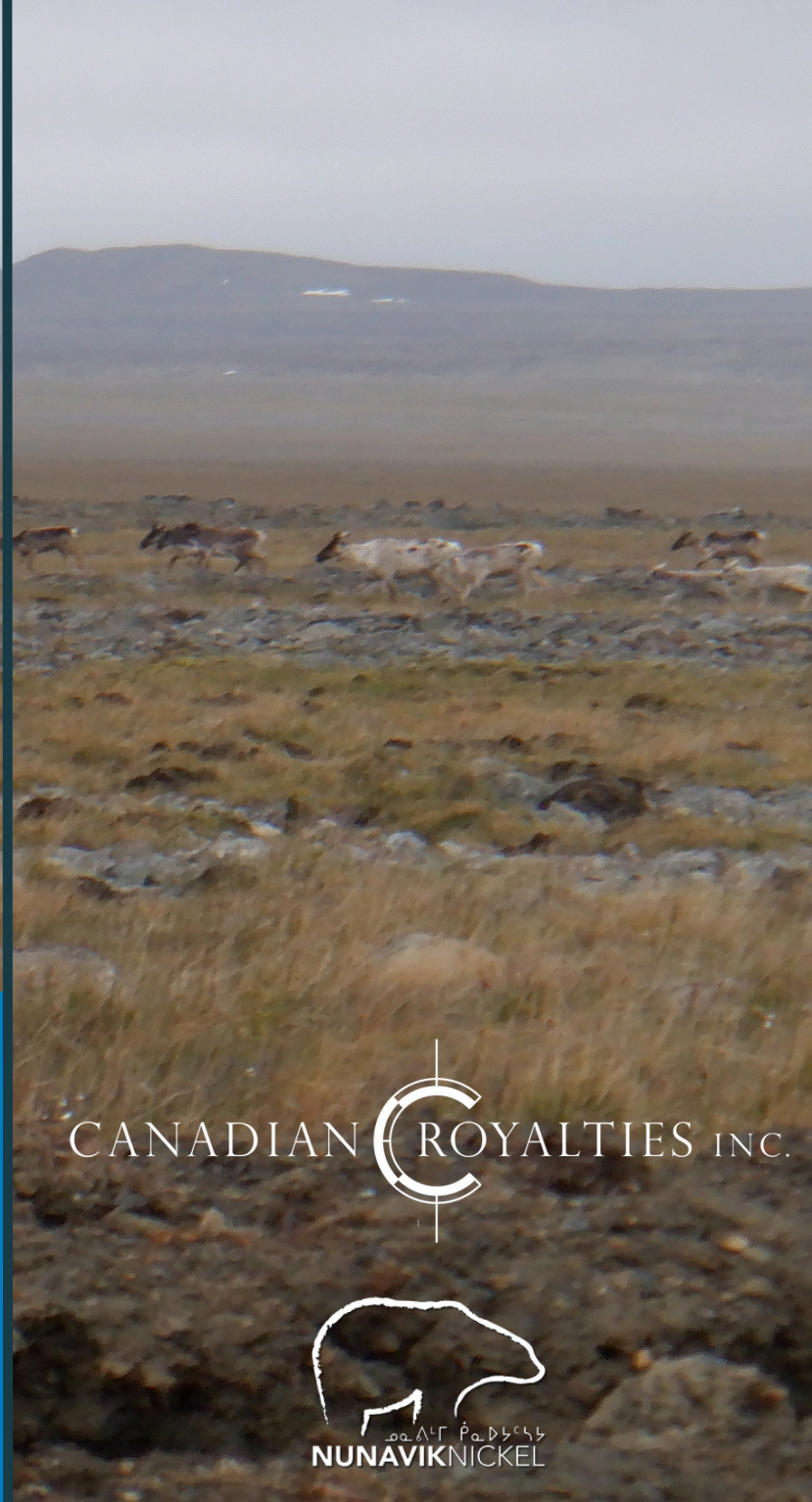
Reach out to us for **knowledge-sharing, questions, or comments** about our projects.

-  1-877-879-1688 #1204
-  communitysupport@canadianroyalties.com
-  canadianroyalties.com

Inukshuk Project and a New Tailings Cell

PUBLIC CONSULTATION

Information Document



ABOUT US

Canadian Royalties is a Montreal-based **mining company** operating copper and nickel mines in Nunavik under the **Nunavik Nickel Project**.

With over **600 employees**, including **8% Inuit Beneficiaries**, we promote economic growth and job opportunities in the region.

Our operations yield tangible benefits for the Northern communities surrounding the Nunavik Nickel Project. Since 2012, we have generated about **\$700 M in revenues for Qualified Inuit Enterprises**.

ENVIRONMENTAL MANAGEMENT

SITE RESTORATION

Both the Inukshuk Project and the new tailings cell will be restored at the end of their operations.

\$110 million

fund secured and allocated for the complete restoration of our sites.
Restoration subcommittee coming soon

SPILL PREVENTION

- Solid procedures to prevent and manage spills:
- Emergency Measures Plan
 - Complete remediation in case of a spill
 - Spill kit in every vehicle and at multiple locations on site
 - Systematic spill reporting by employees

NEW TAILINGS MANAGEMENT OPTIONS

A MEQUILLON & MESAMAX PITS

Capacity: 6 600 000 m³

New pipes that would pump tailings to each pit

B INFRASTRUCTURE AT EXPO

Capacity: 7 100 000 m³

New tailings cell west of Expo Camp

BENEFITS

✓ Minimal visual impact - use of existing infrastructures

✓ Minimal impact on land

✓ Greater distance from river and fish habitat

✓ Trusted tailings management techniques

DRAWBACKS

✗ Distance between the Expo Complex and pits

✗ Potential impacts on fish habitat

✗ Additional infrastructure restoration

✗ Dust generation during construction



CONSTRUCTION
START
2027-2028



TAILINGS
DEPOSIT START
2030

INUKSHUK MINE PROJECT

HIGHLIGHTS

100% underground mining

3,100 tons of ore/day

4,808 tons of ore/day processed at the concentrator

Waste rock from Expo and Méquillon will be transported by **truck** for **backfilling at Inukshuk**.



NO NEW EFFLUENT

Contact water collected at Inukshuk will be **pumped** and **treated** at Expo.

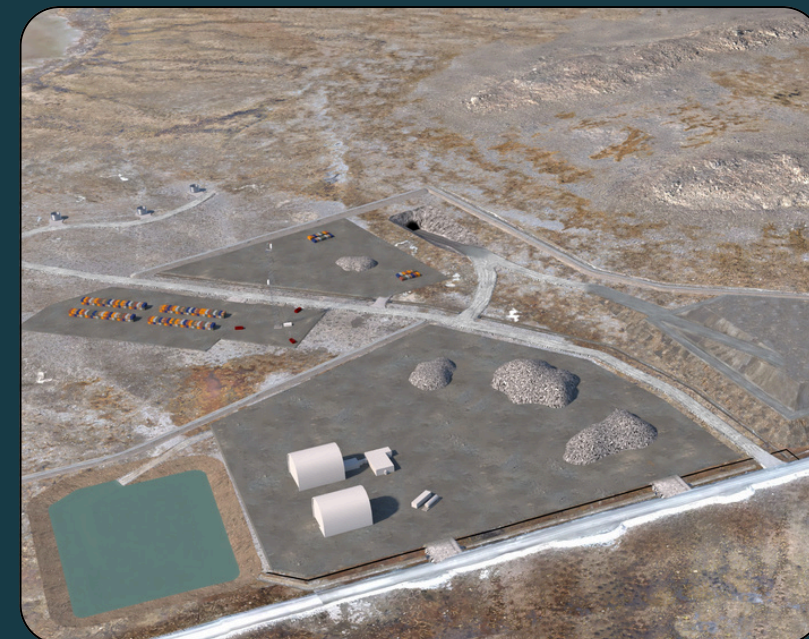
ECONOMIC BENEFITS

Recognized Inuit enterprises, which **currently contribute significantly** to the Nunavik Nickel Project, are expected to receive **25.3% of project spending** totaling \$434.5M.



MAIN INFRASTRUCTURES

- Ore pad and waste rock dump
- Mine water collection pond and waste water line to Expo Complex
- Platforms, domes and telecommunication tower
- Portal access to underground mine



*Location of surface infrastructure subject to change

INUKSHUK DEVELOPMENT TIMELINE

2008

2045

Exploration

Prefeasibility studies and environmental assessments

Government authorizations

2026 Construction

Operations 2027-2034

Environmental monitoring

Closure and progressive restoration

Post-restoration environmental monitoring

Community relations