



# Transport Desgagnés inc.

21 Marché-Champlain Street  
Québec, Québec G1K 8Z8  
Canada

Tel: 418.692.1000  
Fax: 418.692.6044  
Email: info@desgagnes.com  
Website: www.desgagnes.com



## MAIN PARTICULARS

GRT: 11,492  
NRT: 4,474  
LOA: 147.00 m  
LBP: 140.00 m  
Breadth (moulded): 22.80 m  
Depth (moulded): 11.55 m  
Deadweight: 12,440 mt at 8.18 m (summer draught, salt water)  
Builder: Jiangxi Jiangzhou Union Shipbuilding, China, 2018  
IMO Number: 9700392  
Port of Registry: Québec  
Flag: Canada  
Official Number: 847775  
Call Sign: CFA4411  
Type: Multipurpose Dry Cargo Heavy Lift Ship  
Class: DNV 100 A5, Ice Class E3, BC, BWM (D2), Equipped for Carriage of Containers, DBC, DG, G, IW, LC, Strengthened for Heavy Cargo, \* MC E3 AUT EP-D

## BALLAST SYSTEM

Ballast Water Treatment  
System (BWTs): Pania Gloen-Patrol P500 (-Ex)  
Total Ballast: 5,824 m<sup>3</sup>

## MACHINERY

1 x Main Engine MAN B&W 5G45ME-C9.5, 4,800 kW at 94 rpm  
3 x Auxiliary Engines/Generators MAN T&B AG, 532 kW at 1,500 rpm each  
1 x Emergency Generator MAN T&B AG, 355 kW at 1,500 rpm  
1 x Shaft Generator, 611 kW  
1 x Bow Thruster, 600 kW

## SPEED AND CONSUMPTION (MDO)

M/E at Sea: Service Speed: Abt 13.5 kn on abt 12.75 mt/day at 84 RPM  
Maximum Speed: Abt 15.0 kn on abt 16.25 mt/day at 94 RPM  
A/E at Sea: 1.5 – 3.0 mt/day  
A/E in Port: 1.5 – 2.5 mt/day  
Boiler: 1.0 – 1.5 mt/day depending on cargo and weather  
MDO Capacity: 920 m<sup>3</sup> at 98%

## CARRYING CAPACITY

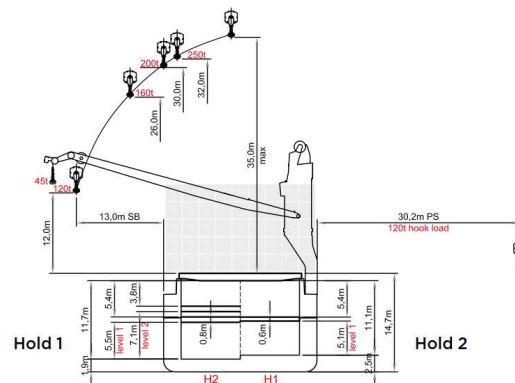
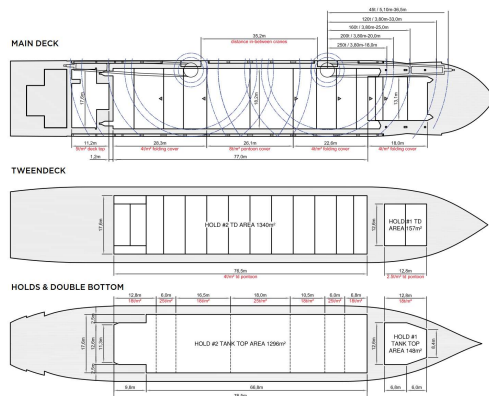
|             | Hold 1   | Hold 2                   | Total                    |
|-------------|--|--------------------------|--------------------------|
| Bale/Grain: | 1,797.29 m <sup>3</sup>  | 15,815.14 m <sup>3</sup> | 17,612.43 m <sup>3</sup> |
| Containers: | 842 TEUs nominal (320 in holds and 522 on deck)<br>50 reefer plugs on deck |                          |                          |

## CRANES (PORT SIDE)

2 Liebherr Cranes, SWL 250 mt each, combinable up to 500 mt

## COMPLIANCE WITH REGULATIONS

Solas, Marpol, St. Lawrence Seaway, Suez, Panama



## SIDE VIEW

