



Transport Desgagnés inc.

21 Marché-Champlain Street
Québec, Québec G1K 8Z8
Canada

Tel: 418.692.1000
Fax: 418.692.6044
Email: info@desgagnés.com
Website: www.desgagnés.com



MAIN PARTICULARS

GRT: 11,503
NRT: 4,474
LOA: 147.00 m
LBP: 140.00 m
Breadth (moulded): 22.80 m
Depth (moulded): 11.55 m
Deadweight: 12,395 mt at 8.18 m (summer draught, salt water)
Builder: Taizhou Sanfu Ship Engineering Co., China, 2020
IMO Number: 9736212
Port of Registry: Québec
Flag: Canada
Official Number: 847795
Call Sign: CFA4404
Type: Multipurpose Dry Cargo Heavy Lift Ship
Class: DNV ✕ Ice Class 1A, BIS, BWM(T), Clean, Equipped for Carriage of Containers, DBC, DG (B, P), EO, Grab (3-20 t), Strengthened for Heavy Cargo (IB)

BALLAST SYSTEM

Ballast Water Treatment
System (BWTs): PureBallast 3.1 Compact Flex System
Total Ballast: 5,824 m³

MACHINERY

1 x Main Engine MAN B&W 5G45ME-C9.5, 4,800 kW at 94 rpm
3 x Auxiliary Engines/Generators MAN T&B SE, 620 kW at 1,800 rpm
1 x Emergency Generator Scania, 323 kW at 1,800 rpm
1 x Shaft Generator, 550 to 685 kW
1 x Bow Thruster Schottel, 600 kW

SPEED AND CONSUMPTION (MDO)

M/E at Sea: Service Speed: Abt 13.5 kn on abt 12.75 mt/day at 84 RPM
Maximum Speed: Abt 15.0 kn on abt 16.25 mt/day at 94 RPM
A/E at Sea: 1.5 – 3.0 mt/day
A/E in Port: 1.5 – 2.5 mt/day
Boiler: 1.0 – 1.5 mt/day depending on cargo and weather
MDO Capacity: 920 m³ at 98%

CARRYING CAPACITY

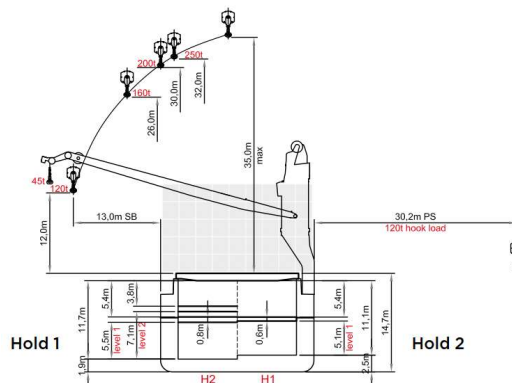
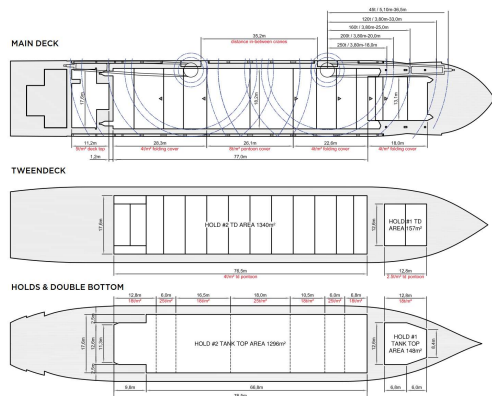
	Hold 1	Hold 2	Total
Bale/Grain:	1,797.29 m ³	15,815.14 m ³	17,612.43 m ³
Containers:	842 TEUs nominal (320 in holds and 522 on deck) 50 reefer plugs on deck		

CRANES (PORT SIDE)

2 Liebherr Cranes, SWL 250 mt each, combinable up to 500 mt

COMPLIANCE WITH REGULATIONS

Solas, Marpol, St. Lawrence Seaway, Suez, Panama



SIDE VIEW

